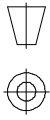


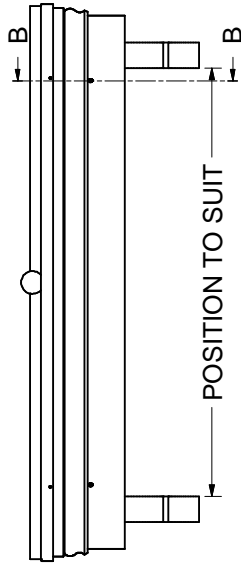
<b>TITLE ASHTON 3 CANOPY ASSEMBLY (LEAD COVERED)</b>	
MATERIAL	EUROPEAN RED DEAL V
TREATMENT	DIP TREATED WITH GLASURIT GLASSOXYD NATURA BASE COAT FUNGGICIDE STAIN
SCALE	DRN
DATE	R. SPENCER 06/06/2005
DRG. No.	ASH3/700/LEAD

**Canopy Products Ltd**  
Paradise Works  
Paradise Street  
Ramsbottom Lancs BLO 9BS  
Tel 01706 82 2665  
Fax 01706 82 3333

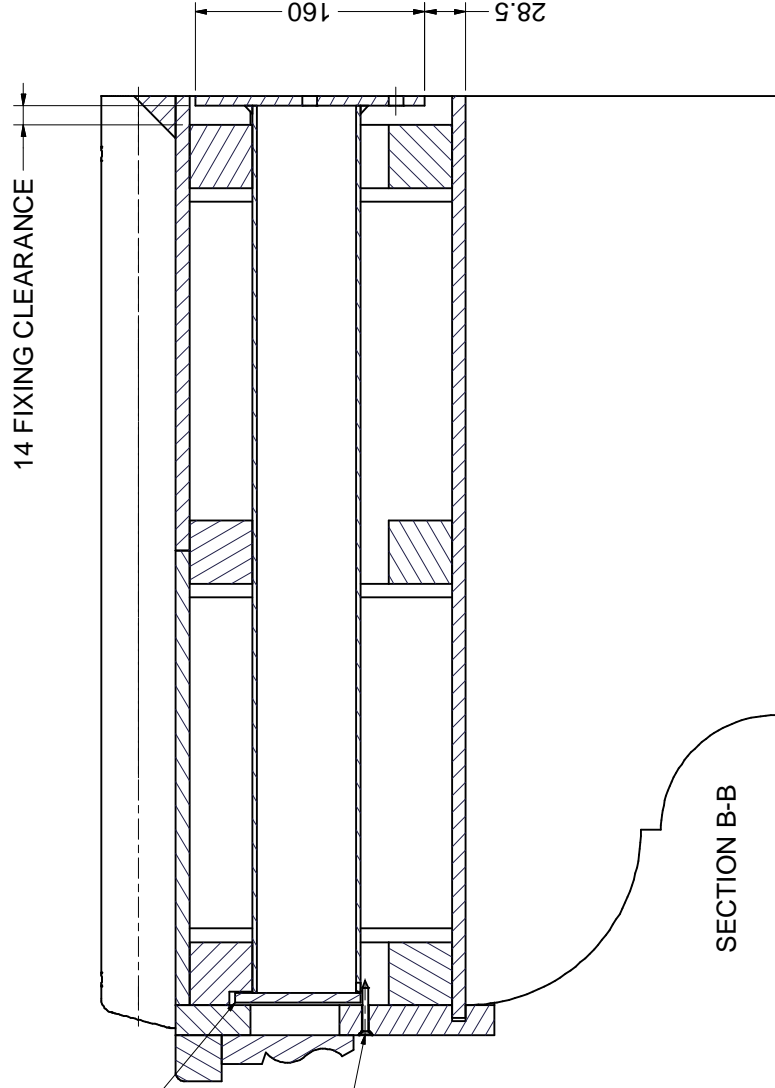


**ASSEMBLY INSTRUCTIONS**

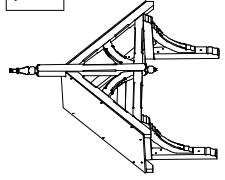
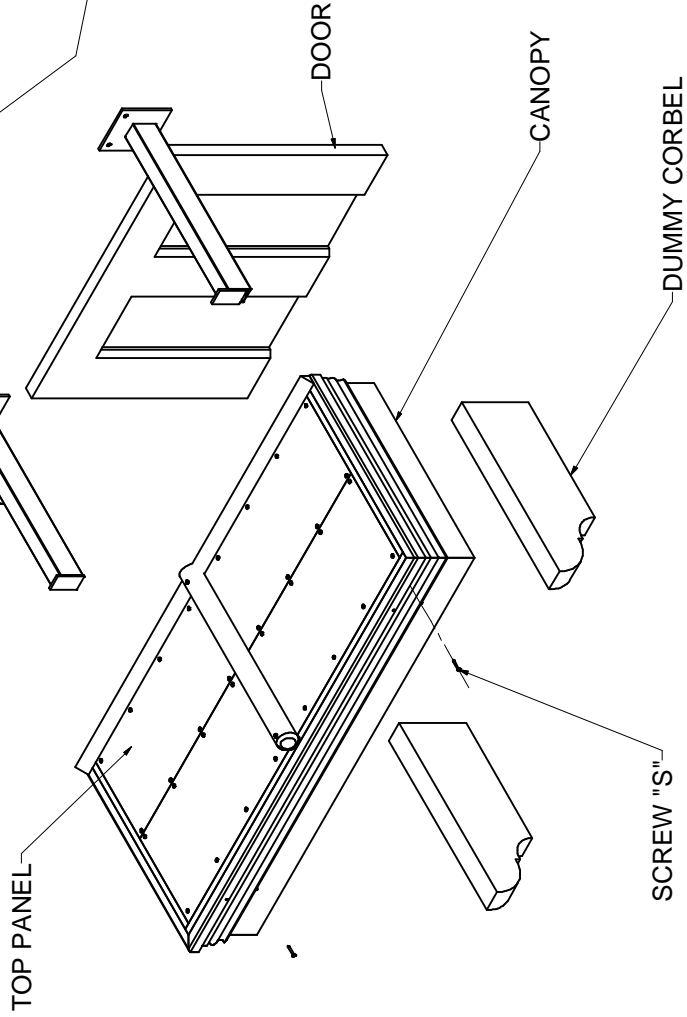
DECIDE YOUR PREFERRED LOCATION OF THE DUMMY CORBELS ON THE UNDERSIDE OF THE CANOPY AND FIX WITH SCREWS. ACCESS FOR SCREWS IS OBTAINED BY REMOVING THE TOP PANELS. POSITION THE GALVANISED STEEL WALL SUPPORTS CENTRALLY AROUND DOOR FRAME TO GIVE YOUR DESIRED CANOPY HEIGHT. LIFT WOODEN CANOPY ONTO THE WALL BRACKETS ENSURING THE LIP ON THE END OF THE STEEL SUPPORT IS ENGAGED IN THE REBATE WITHIN THE CANOPY CARCASS. CENTRALISE THE CANOPY AROUND DOOR FRAME AND FIT SCREWS "S" TO PREVENT REMOVAL FIT LEAD SHEETING TO CANOPY AND SEAL AT WALL.



GALVANISED STEEL WALL SUPPORTS  
FIX TO BRICKWORK WITH  
Ø10 X 100 LG CHEMICAL ANCHORS



SECTION B-B



TITLE ASHTON 3 CANOPY ASSEMBLY (LEAD COVERED)

**Canopy Products Ltd**  
Paradise Works  
Paradise Street  
Ramsbottom Lancs BLO 9BS  
Tel 01706 82 2665  
Fax 01706 82 3333

MATERIAL	EUROPEAN RED DEAL V
TREATMENT	DIP TREATED WITH GLASSOXYD NATURA BASE COAT FUNGICIDE STAIN
SCALE	DRN
DATE	R. SPENCER 06/06/2005
DRG. No.	

ASH3/700/LEAD